



Welcome to Year 1!
2024-2025

Welcome to Key Stage One and the team!








- Miss Clay
- Mrs Quarterman
- Mrs Warren
- PPA time: Tuesday afternoons.
- Weekly tests and forest school

What the weekly timetable will look like...

	Monday	Tuesday	Wednesday	Thursday	Friday
8:40	EMW/ Register	EMW/Register	EMW/ Register	EMW/ Register	EMW/Register
9:00	Assembly (Whole school)	Reading Groups	Reading Groups	Reading Groups	Arithmetic test
9:30	PE	Phonics	Phonics	Phonics	Phonics
10:30	SNACK & BREAKTIME				
10:55	Arithmetic	Arithmetic	Arithmetic	Arithmetic	Spelling test
	Maths	Maths	Maths	Maths	English
12:00	LUNCHTIME				
1:00	Register and toilets	Register and toilets (PPA)	Register and toilets	Register and toilets	Register and toilets
1:15	Phonics English	RE	Science	English	Library slot Art/DT
2:15	Topic	PSHE	Computing	PE	Creative Art/Play/Music
3:00		Assembly (Oracy)	Assembly (values)	Assembly (singing)	Assembly (celebration)
3:20	HOMETIME				

Class Dojo

Give feedback to 29 students ✕

 1 Helping others	 1 On Task	 1 Participating	 1 Persistence
 1 Teamwork	 1 Working Hard	 Edit skills	

Miss Clay's Class 29 Students 38 Parents

Classroom Portfolios Class Story Messages

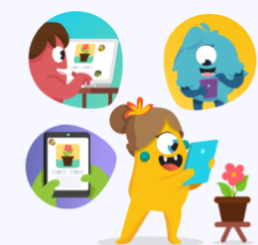
Student login 90% Home connections Options

What's happening in your classroom?

Photo/Video File Record Event Post

Upcoming Events

No upcoming events



Create your first post 🙌

Welcome parents and kids to your class with photo, text or video

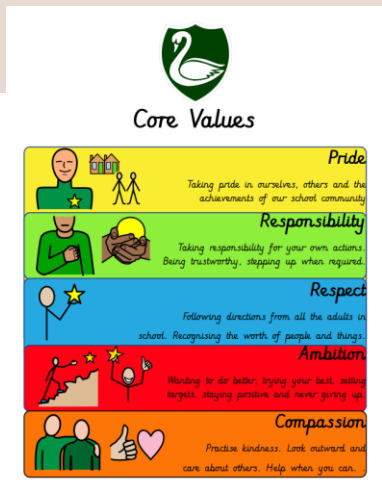
Behaviour Policy for Year 1

Positive recognition

- House points
- Stickers representing the core values
- Weekly certificates
- Praise (Verbal and non-verbal)
- ‘Work that is out of this world!’
- Recognition shared with adult at home
- Praise given from SLT

Consequences

- 1, 2, 3 verbal warnings
- 5 minutes spent in reflection area
- 5 minutes spent in reflection area of a different classroom
- Child sent to SLT
- Child sent to HT



Themes of the year...

Autumn 1	We Are Explorers
Autumn 2	Where We Live
Spring 1	Discovery Detectives
Spring 2	Wild Weather
Summer 1	We are History Makers
Summer 2	Oh I Do Like To Be Beside the Seaside

English

- FICTION, NON-FICTION AND POETRY LINKED TO LEARNING THEMES.
- THREE WEEK READING AND WRITING BLOCK.
- AT THE END OF THE THREE WEEKS, THE CHILDREN WILL FINISH WITH AN EXTENDED PIECE OF WRITING.
- DELVE DEEPER INTO UNDERSTANDING AND DISCUSSING WHAT THEY HAVE READ
- OPPORTUNITIES FOR DRAMA, PROOF-READING, EDITING AND ORAL REHEARSAL.

Reading

- Alongside their reading within English lessons, the children will be able to change their own reading books daily.
- Children will read to an adult on a 1:1 basis at least once a fortnight.
- Each reading session, either during class or 1:1, will focus on the development of a key skill each week, such as, inference or retrieval.
- Library sessions will be on a Friday afternoon.

Introducing... Reading Raffle Tickets



Everybody read!

What are we hoping to achieve?

- To raise the profile of reading at GPNS.
- To increase the number of children who engage with reading outside of school.
- To create a 'love of reading' that goes beyond their time at GPNS.

How does it work?

- Read with your child at least three times a week and record it in their home-link book.
- Every Friday, the children who have read at least three times that week will receive a raffle ticket and be entered into a prize draw.
- At celebration assembly, one raffle ticket will be drawn out and the winning child will receive a brand-new book to keep!

Phonics

- During the week beginning Monday 9th June 2025, we will be carrying out the phonics screening assessment. The purpose of this assessment is to assess how the children use the phonemes (sounds) that they have been taught to decode words.

Spellings

- Spellings are directly linked to phonics and the children's reading and writing. The words will be focused on sounds (phonemes) that the children have learnt at school, alongside, two additional tricky words (words that cannot be sounded out). A spellings overview will be sent home for the whole half-term with weekly spellings given out on Fridays. The children will then be tested on those spellings on the following Fridays.
- Marks given following week
- EdShed

Maths- White Rose

Autumn 1	Place value (within 10) Addition and subtraction (within 10)
Autumn 2	Addition and subtraction (within 10) Shape
Spring 1	Place value (within 20) Addition and subtraction (within 20)
Spring 2	Place value (within 50) Length and Height Weight and Volume
Summer 1	Multiplication and Division Fractions Position and Direction
Summer 2	Place value (within 100) Money Time

- Daily arithmetic followed by test on Fridays- Marks given following week

PE

- PE will be taught every Monday (Football) and Thursdays (From Autumn 2).
- Forest school will take place most Wednesdays through Autumn 1, replacing the Thursday session for PE.
- Black trainers with PE kit.
- Please can all PE kit be clearly named along with school uniform.
- Please can all hair longer than shoulder-length be tied up.
- Please can any earrings be removed for the lesson or taped if they are new piercings.
- Opportunities for external providers

Homework

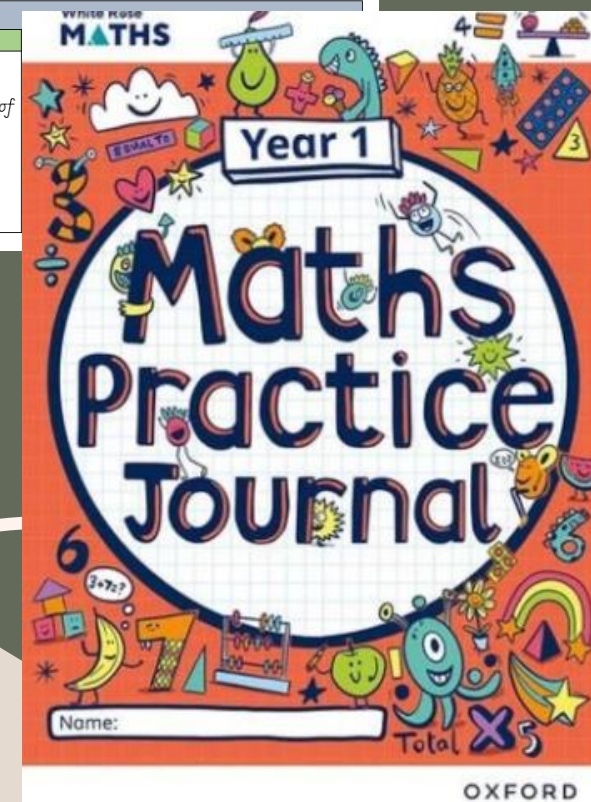
- Homework will be sent out electronically every half-term for children to complete a minimum of two tasks.
- White Rose journals to be completed at home. Relevant pages to be found on dojo class story each week.
- Send evidence through your dojo portfolio.
- House point for each piece of homework completed!

Year 1 HOME LEARNING 4th September – 25th October

Weekly homework		
Reading	Spellings	Maths
We expect you to read every day. If you read at least three times a week then you will earn a house point and a raffle ticket which could lead to a prize.	We expect you to practise your spellings every week. If you practise at least three times a week, you will receive a house point.	We would like you to complete the pages that your teacher tells you to in your Maths Journal each week. This will help you to remember the maths learning you have done at school all week. If you complete it, upload a photo of your learning to your portfolio on class dojo and you will get a house point.

Every piece of homework that is completed will earn you a house point.
The home learning tasks below are optional. You're encouraged to complete a minimum of two. When you have completed a task, please bring it into school or upload a photo to your portfolio on class dojo and you will get a house point.

Half-termly Homework	
Science	History
Make or draw a zoo e.g. Lego, cuddly toys that includes at least one animal from each animal group. Can you name underneath your animal; what it is and what animal group it belongs to? Can you research what the animal eats?	Research a famous explorer of your choosing that we have not looked at in school and draw a comic strip/roadmap of what they achieved as an explorer.



Trips and assemblies!

Year 1 will be attending a day trip this academic year, linking to their theme of Oh I Do Like to Be Beside the Seaside.

Currently we are awaiting further confirmation of where and when this will be, but we will let you know as soon as possible.

Year 1 and 2 Nativity: Monday 16th December (2pm) and Tuesday 17th December (9:15am)
Class assembly: Thursday 8th May 2025 – 2:45pm

Parent reps!

Two Volunteers please!

How to support your child with their learning at home...

- Read with the children as much as possible at home, both for pleasure and to consolidate the reading raffle scheme. This can be through any form of text, such as, a book, newspaper, magazine, website etc.
- Support your child with their homework tasks.
- Practice the children's weekly spellings with them and encourage them to complete their assignments online.
- School lunches on SCOPAY

Please do not hesitate to contact me either via the home link system or whether you come to see me at the end of the school day!

Email: sarah.clay@godstone.surrey.sch.uk



Thank you very much
for your time today!
Any questions?